

Translating Hep B Data

What we did in Hawai‘i





A landscape photograph featuring a vibrant green field of tall grass in the foreground, a deep blue ocean in the middle ground, and a bright blue sky with scattered white clouds in the background. The text "Don't get mad, get data" is overlaid in white, bold, sans-serif font across the center of the image.

Don't get mad, get data



The question is...

What can you do

The question is...

**What can you do
with what you have?**

Numbers and rates (per 100,000) of reported cases of **ACUTE HEPATITIS B** virus infection, by state or jurisdiction, United States, 2016–2020¹

State or Jurisdiction	2016 No.	2016 Rate	2017 No.	2017 Rate	2018 No.	2018 Rate	2019 No.	2019 Rate	2020 No.	2020 Rate
Alabama	59	1.2	82	1.7	48	1.0	75	1.5	61	1.2
Alaska	6	0.8	9	1.2	7	0.9	6	0.8	4	0.5
Arizona	14	0.2	26	0.4	23	0.3	28	0.4	18	0.2
Arkansas	49	1.6	46	1.5	47	1.6	39	1.3	36	1.2
California	115	0.3	126	0.3	105	0.3	111	0.3	53	0.1
Colorado	28	0.5	32	0.6	21	0.4	17	0.3	13	0.2
Connecticut	7	0.2	10	0.3	10	0.3	3	0.1	—	—
Delaware	3	0.3	9	0.9	7	0.7	12	1.2	7	0.7
District of Columbia	U	U	U	U	U	U	U	U	U	U
Florida	558	2.7	588	2.8	617	2.9	595	2.8	456	2.1
Georgia	100	1.0	106	1.0	179	1.7	114	1.1	104	1.0
Hawaii	—	—	—	—	3	0.2	1	0.1	—	—



What Did We Have?

Local Context



What Did We Have?

Local Context

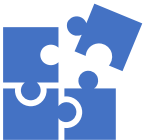


HI Health Matters

Laulima Claims

US Cancer Stats²

CDC Wonder³



What did we **learn**?

Sources into Data



Figure 1. Age-adjusted rates of **hepatitis B-associated death** (per 100K), **Hawai'i vs U.S.**

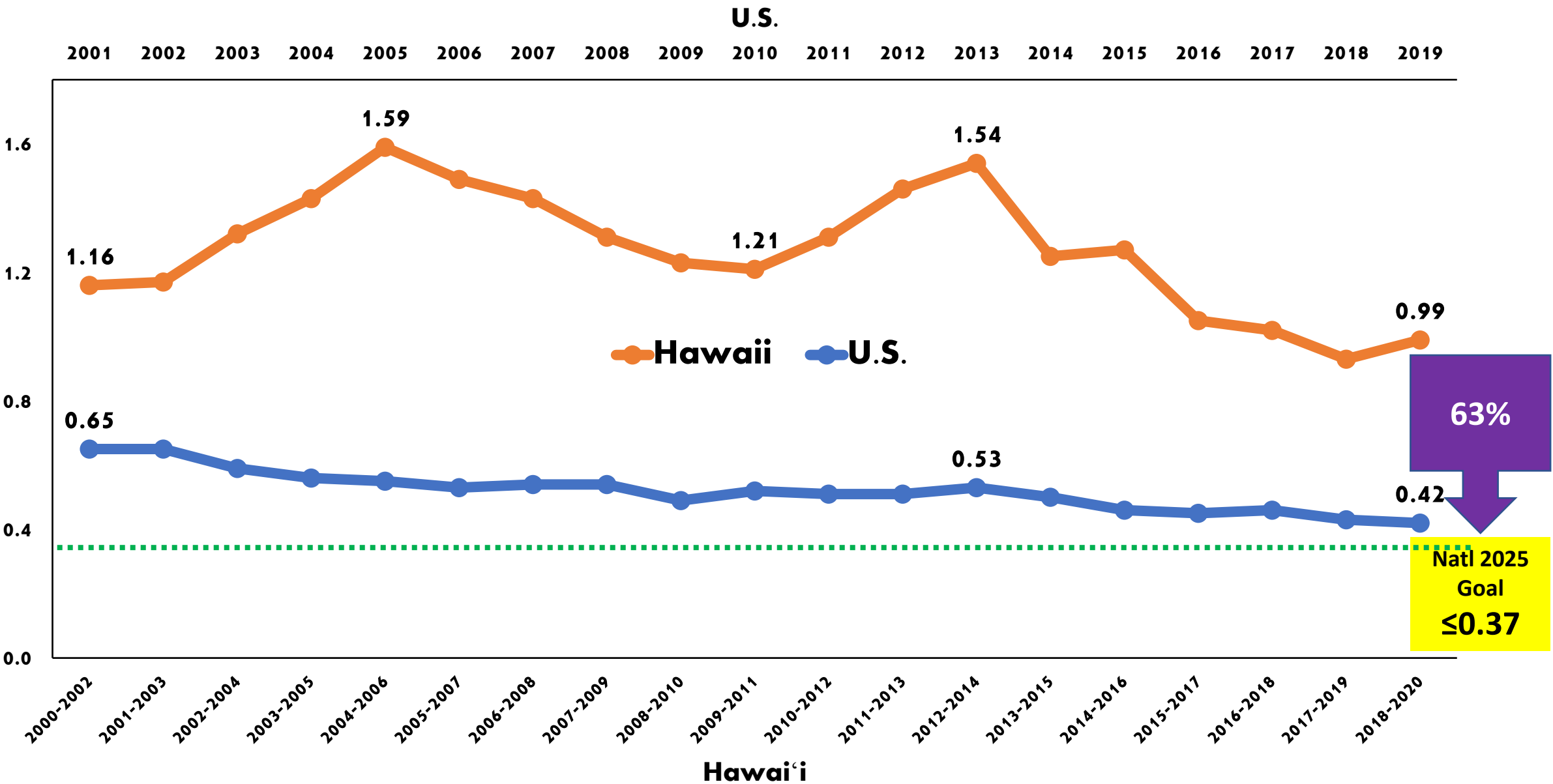
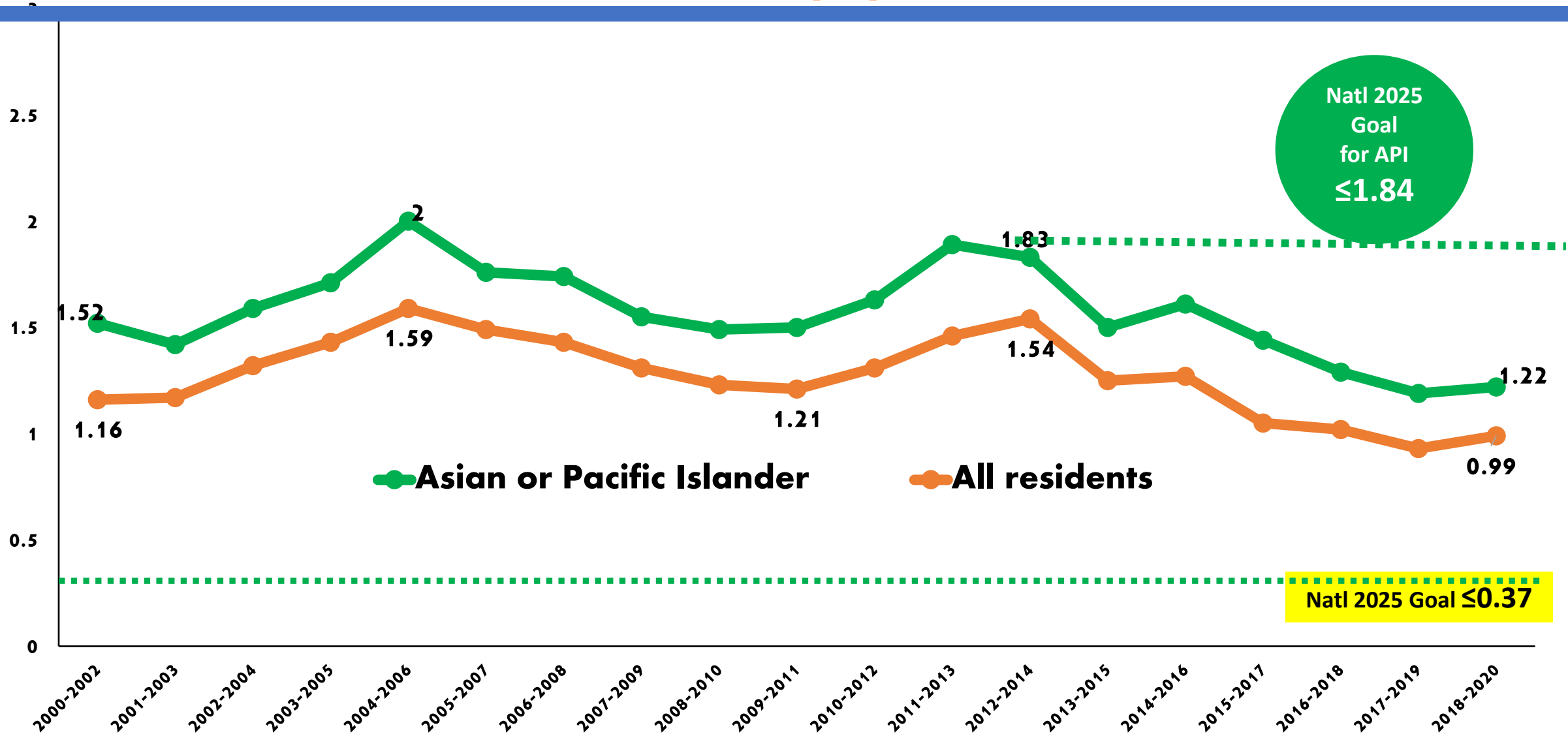


Figure 3. Three-year moving average rates of **hepatitis B**-associated death (per 100K),
statewide vs API populations



How did we **translate**?

Data into Meaning





A landscape photograph featuring a vibrant green field of tall grass in the foreground, a deep blue ocean in the middle ground, and a bright blue sky with scattered white clouds in the background. The text "What is truth?" is overlaid in the center.

What is truth?

Align Efforts

Data for Action

- **CDC**
- **Hep B United**
- **Community**

MESSAGES



- **Global Health**
- **US Government**
- **Local**

PLANS



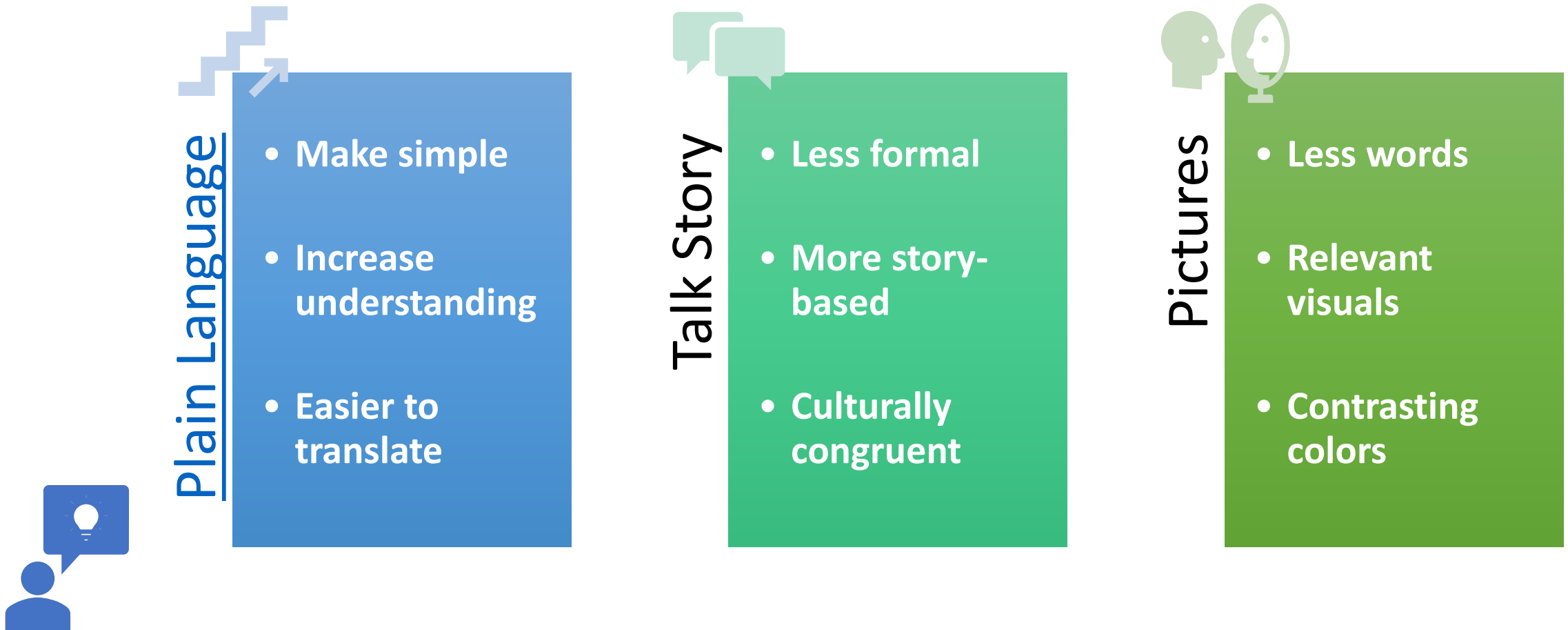
- **Current Laws**
- **Proposed Bills**
- **Budgets**

POLICY



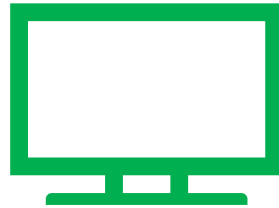
Access at All Levels

Data for Action



Amplify Channels

Data for Action



Activate People

Data for Action



What did we **do**?

Data into Action



Align

Data into Action

HepFree
30



Align w Data

Data into Action



Align w Strategy

Data into Action



Access by Report

Data into Action

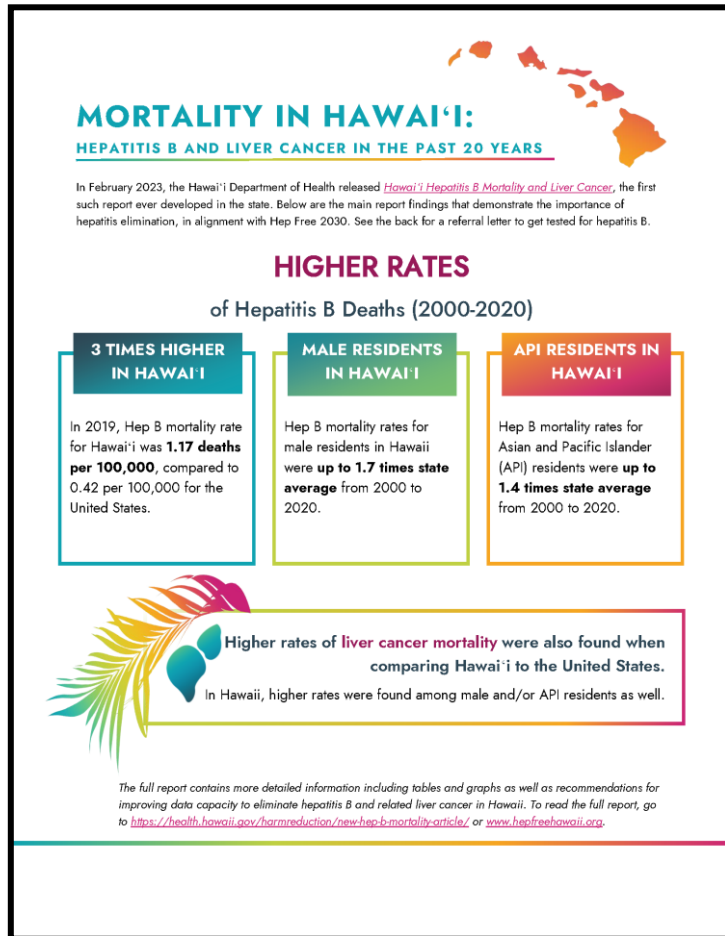


<https://health.hawaii.gov/harmreduction/new-hep-b-mortality-article/>



Access by Infographic

Data into Action

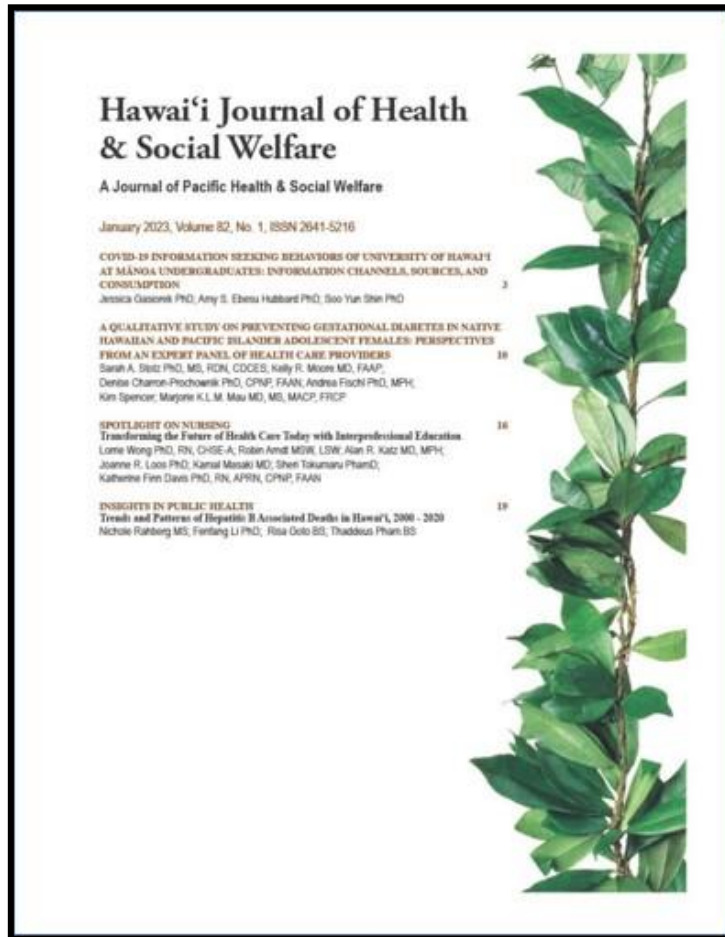


<https://health.hawaii.gov/harmreduction/new-hep-b-mortality-article/>



Access by Journal

Data into Action



<https://health.hawaii.gov/harmreduction/new-hep-b-mortality-article/>



Access by Website

Data into Action

Hawaii State Department of Health
Harm Reduction Services Branch
Ke 'Ōhene Ōlokeino

Home Get Tested Protect Yourself Sexual & Gender Minorities Learn About Diseases DOH Home

For Providers About Us Contact

Updates & Resources

New Hep B Mortality Report!
Posted on Jan 31, 2023 in [Epidemiology](#) [Hepatitis B](#)

Recent Posts

- New Hep B Mortality Report!
- Upcoming Hawaii's Hepatitis B Mortality Report
- Hawaii's Morbidity Resources
- Hawaii 2022 Report on Houseless SGM People
- Racism Is an Ongoing Public Health Crisis
- Third Edition SGM Services Directory
- JOB OPPORTUNITY: Light Truck Driver (89 day hire)
- Happy Hanalei Pride 2021!
- CDC Releases Updated STI Treatment Guidelines for 2021
- DOH Releases Medical Advisory on New Gonorrhea Treatment Guidelines

Hepatitis B and Liver Cancer in the Past 20 Years

In February 2023, the Hawaii Department of Health released

Higher Rates of Hepatitis B Deaths in Hawai'i (2000-2020)

3 Times Higher

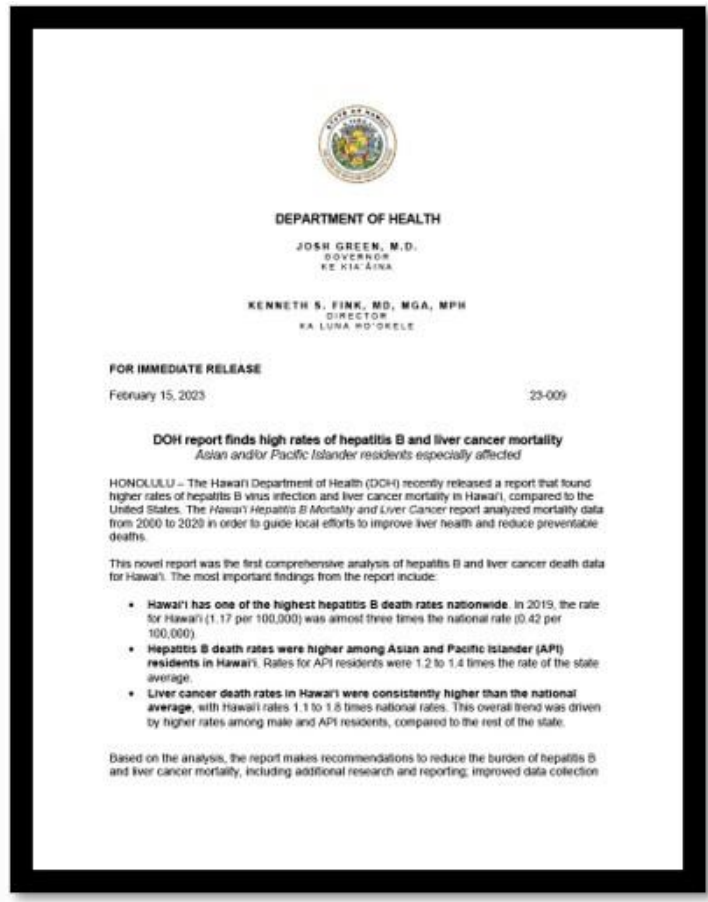
In 2019, Hep B mortality rate for Hawai'i was **1.17 deaths per 100,000**, compared to 0.42 per 100,000 for the United States.

Male Residents



Amplify thru DOH

Data into Action



<https://health.hawaii.gov/news/newsroom/doh-report-finds-high-rates-of-hepatitis-b-and-liver-cancer-mortality/>



Amplify thru Media

Data into Action



94.7 FM Hilo • 101.5 FM Kona

HOME EVENTS NEWS ▾ CURRENT CONTESTS PHOTOS/VIDEO ▾ ON-AIR ▾ PODCASTS ▾ CO

DOH Report Finds High Rates Of Hepatitis B And Liver Cancer Mortality In Hawai'i

February 20, 2023 at 5:20 am



Tuesday, April 18, 2023 | Today's Paper | 78.656°

Hawaii News

Report: High rates of hepatitis B, liver cancer mortality

By Wyatt Haupt Jr. The Garden Island | Monday, February 20, 2023, 12:05 a.m.

Share this story

Local News

Hepatitis B deaths in Hawai'i surpass national average, report says

Hawaii Public Radio | By Zoe Dym
Published February 21, 2023 at 12:13 PM HST

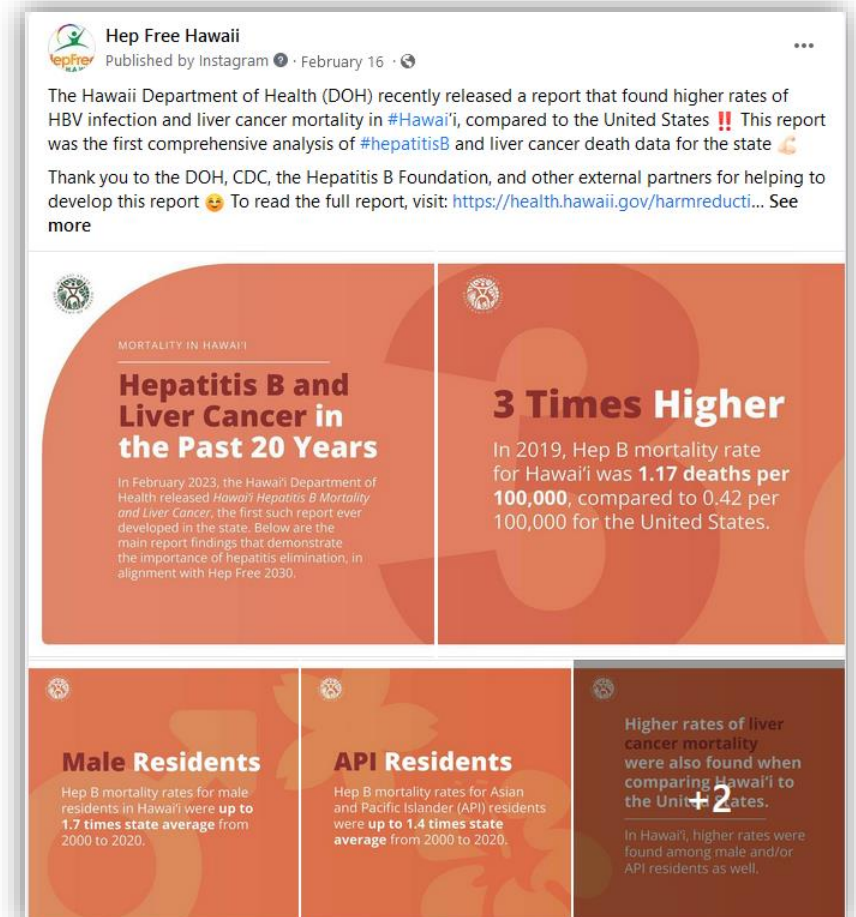
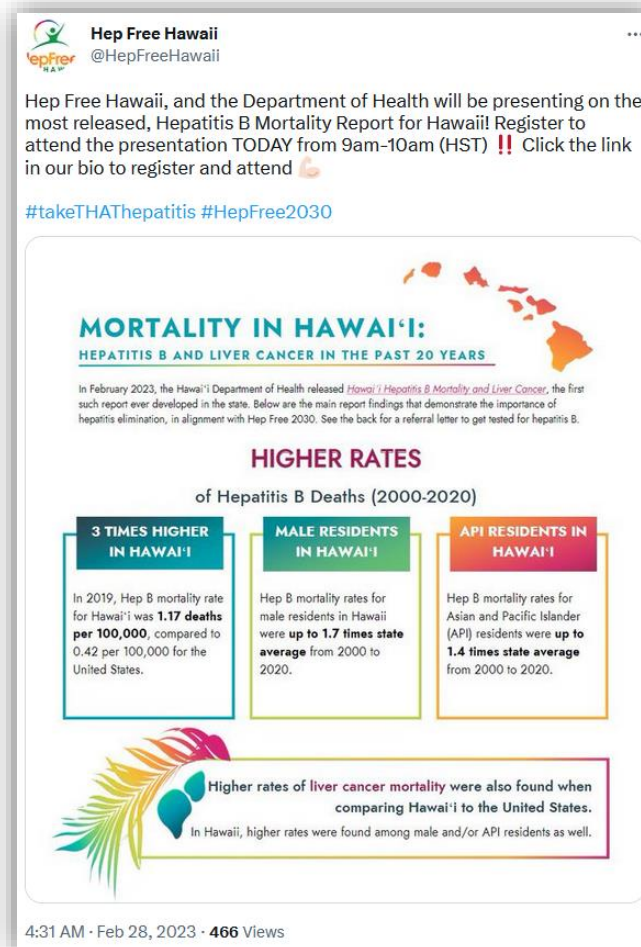
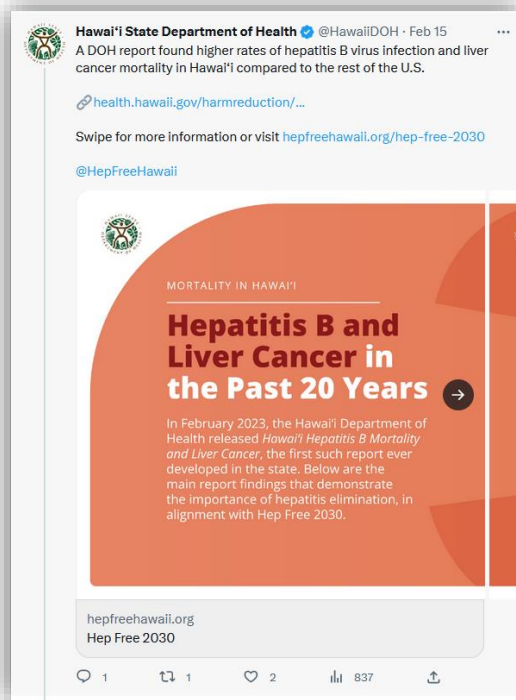


▶ LISTEN • 0:55



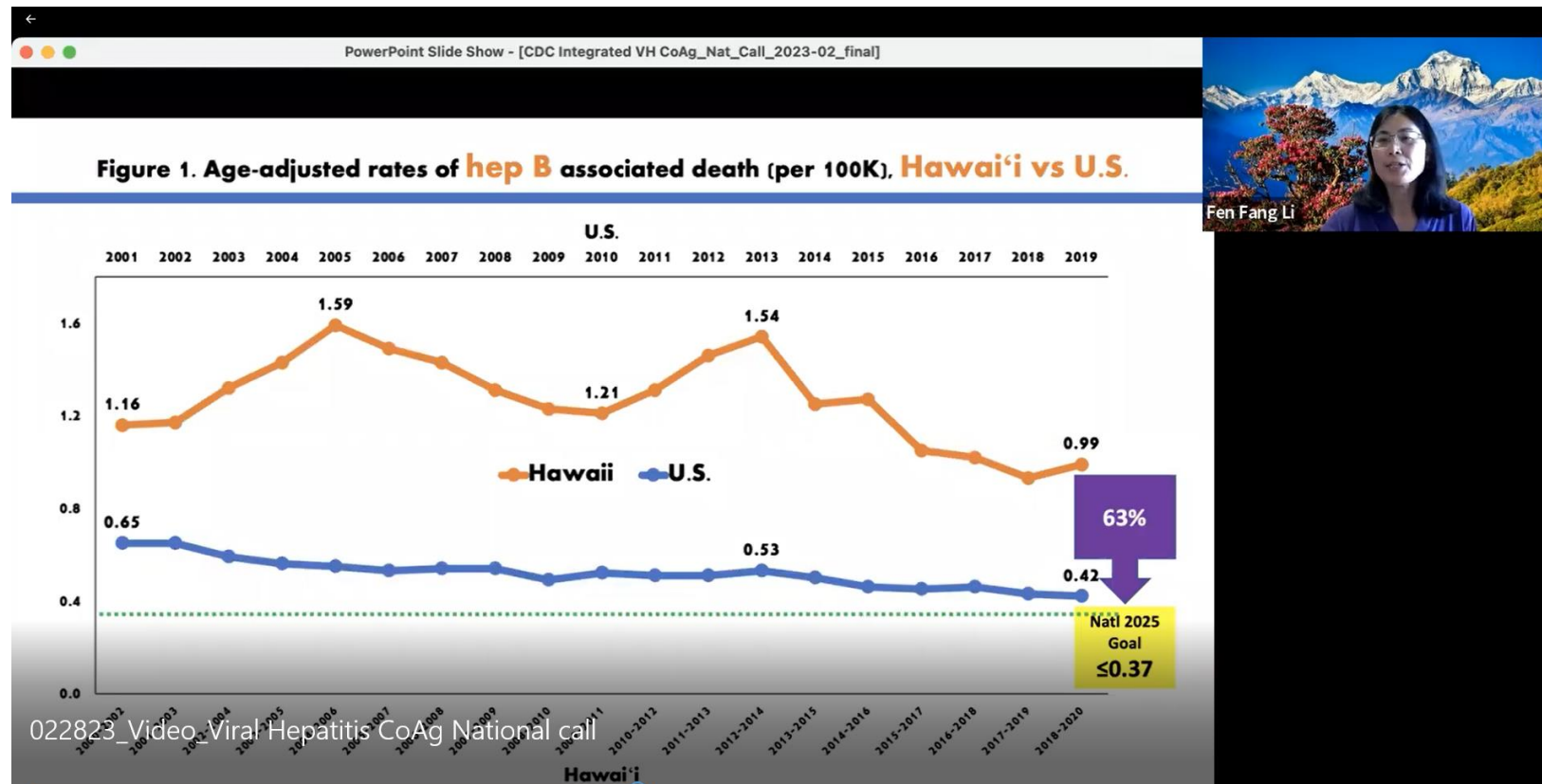
Amplify thru Socials

Data into Action



Amplify thru Presenting

Data into Action



Fen Fang Li



<https://centersfordiseasecontrol.sharefile.com/share/view/s2a0d856f8a754e8fac21c3b1196aec1e>

Activate Champions

Data into Action



**WE CAN
SAVE LIVES**





**WE CAN
SAVE LIVES**

**HepFree
2030**



• HIGHER RATES

of Hepatitis B Deaths (2000-2020)

3 TIMES HIGHER IN HAWAI'I

In 2019, Hep B mortality rate for Hawai'i was **1.17 deaths per 100,000**, compared to 0.42 per 100,000 for the United States.

MALE RESIDENTS IN HAWAI'I

Hep B mortality rates for male residents in Hawaii were **up to 1.7 times state average** from 2000 to 2020.

API RESIDENTS IN HAWAI'I

Hep B mortality rates for Asian and Pacific Islander (API) residents were **up to 1.4 times state average** from 2000 to 2020.

<https://health.hawaii.gov/harmreduction/new-hep-b-mortality-article/>

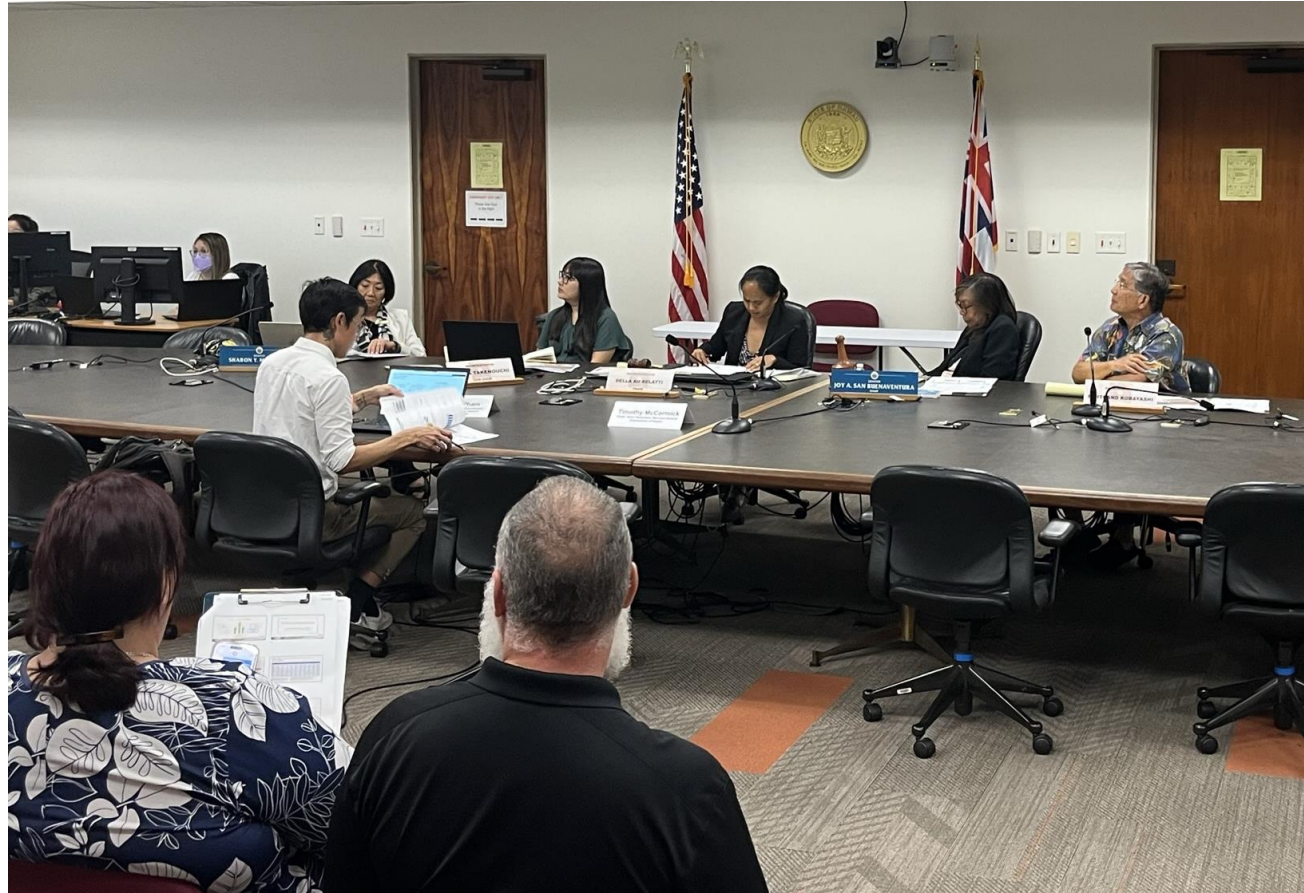
HepFree
2030



HOW CAN WE DO THIS?

Activate Policymakers

Data into Action



<https://www.youtube.com/watch?v=nTJe1QaaTAc>

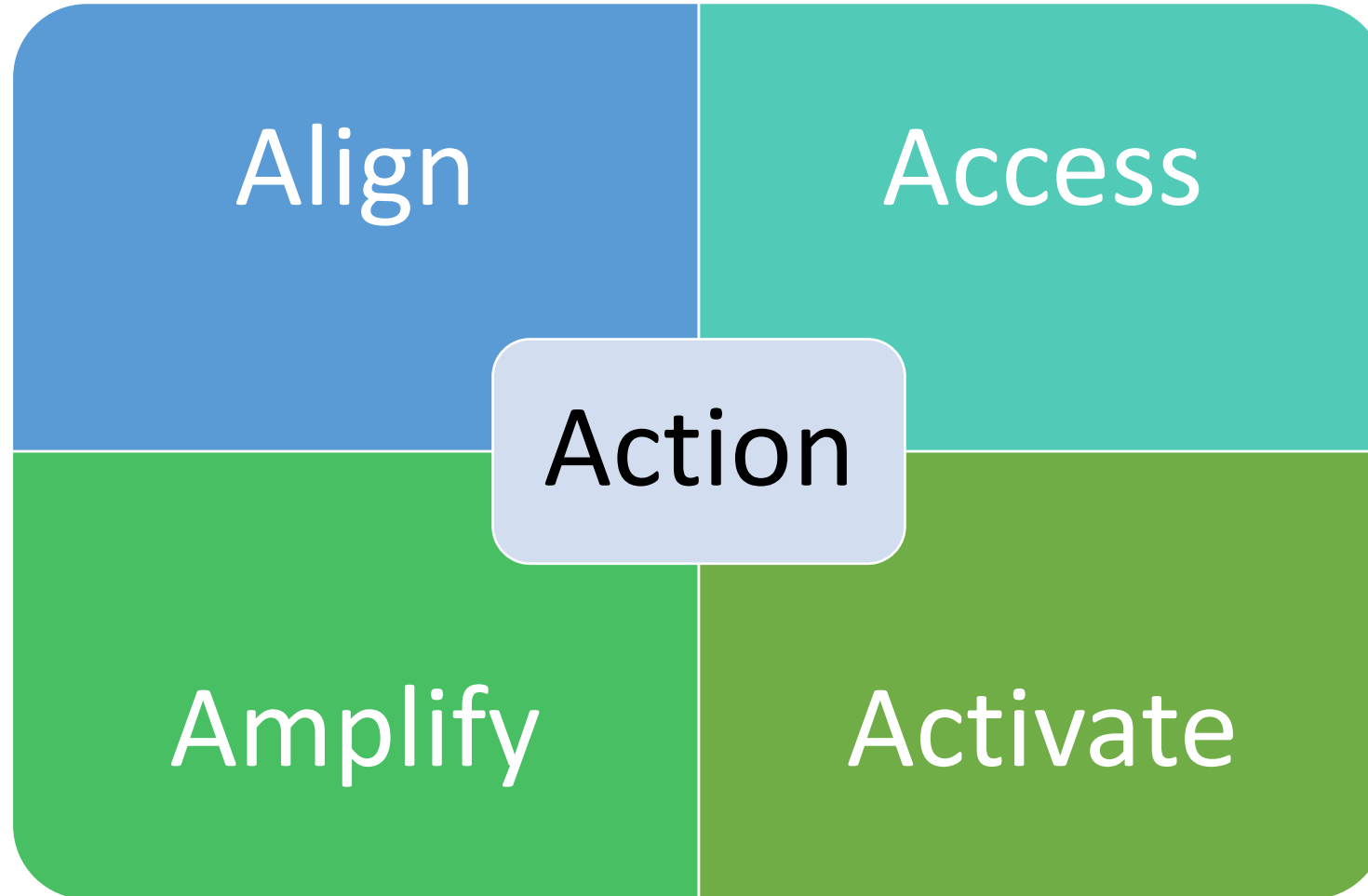
The question is...

What can you do

The question is...

**What can you do
with what you have?**

You can **speak data**







Thoughts?

thaddeus.pham@doh.hawaii.gov